



Drylining

For any structure

Checkmate install dryline systems to meet the most demanding of specifications in new or existing structures.

Our wall and ceiling installations meet performance specification requirements with aesthetics to suit individual interior styles.

We ensure every part of the installation is managed by our experienced people to ensure 'duty of care' compliance with Building Regulations, Regulatory Reform (Fire Safety) Order to name but two.

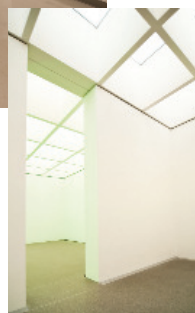
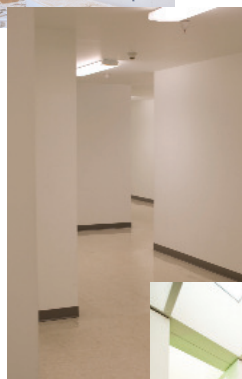
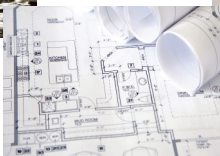
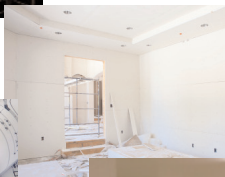
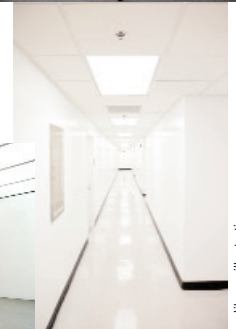
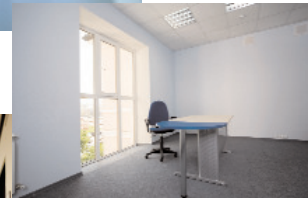
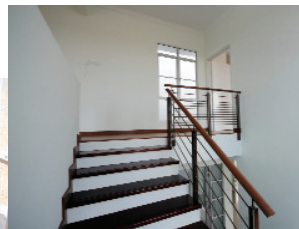
Drylining is part of our core business. We provide a range of practical walling solutions including

site surveys and consultation with clients and manufacturer's ensuring end user satisfaction.

Our range of clients include Tavern Developments, JD Wetherspoon, Cloverleaf Restaurants' and the Interserve Group working on several projects under the Building Schools for Future programme.

Public buildings
Hospitals
Schools
Offices
Museums
Retail shops
Pubs & Hotels
Airports & Arenas
Building conversions

"Checkmate are very user friendly and quick to respond to any issue, they have the manpower to meet our demands",
Chris Backhouse, Tavern Developments



Checkmate Fire Solutions Limited

Royd House, 11 Birds Royds Lane
BRIGHOUSE, West Yorkshire HD6 1LQ
Tel: 01484 721154
Fax: 01484 723152
email: info@checkmatefire.com

SOUTH EAST Unit 1, Woodgates Farm Woodgates End, DUNMOW, Essex CM6 2BN
T: 01279 850021 F: 01279 850261
SOUTH WEST 1 Faraday Court, Rankine Road BASINGSTOKE, Hampshire RG24 8PF
T: 01256 811133 F: 01256 333325

www.checkmatefire.com

